

R150M

Compact automatic filling unit



Water
Management

Datasheet
0808EN 09/2022



Automatic filling unit for installation on water adduction pipes of closed-circuit heating/cooling systems. Possibility to preset the system fluid pressure. Removable cartridge and filter for easy cleaning and maintenance. Anti-limestone function and compensated housing pressure adjustment.

➤ Versions and product codes

PRODUCT CODE	CONNECTIONS	VERSION
R150MY003	G 1/2"M x G 1/2"F	With pressure gauge
R150MY013	G 1/2"M x G 1/2"F	Without pressure gauge

➤ Technical data

Performance

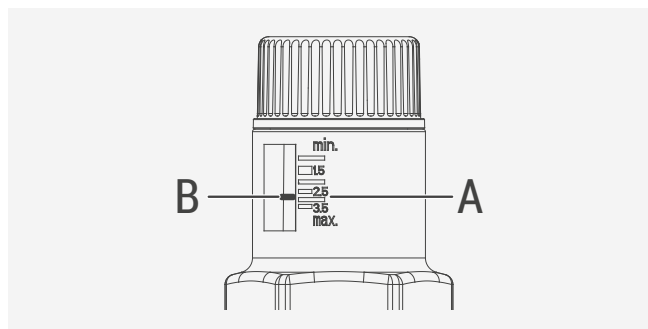
- Fluid: water
- Temperature range: 5÷70 °C
- Inlet max. pressure: 16 bar
- Adjustment range: 0,3÷4 bar (preset calibration: 1,5 bar)
- Accuracy: ± 0,2 bar
- Filtering capacity: 300 µm
- Pressure gauge scale (only for R150MY003): 0÷4 bar
- Connections:
 - Inlet: G 1/2"M with tail piece
 - Outlet: G 1/2"F
 - Pressure gauge: G 1/4"F

Materials

- Body: CW617N - UNI EN12165 brass
- Upper bonnet and red knobs: PA66 GF 20
- Adjustment stem: AISI304 stainless steel
- Gaskets: EPDM
- Cartridge: POM
- Filter: stainless steel

➤ Main features

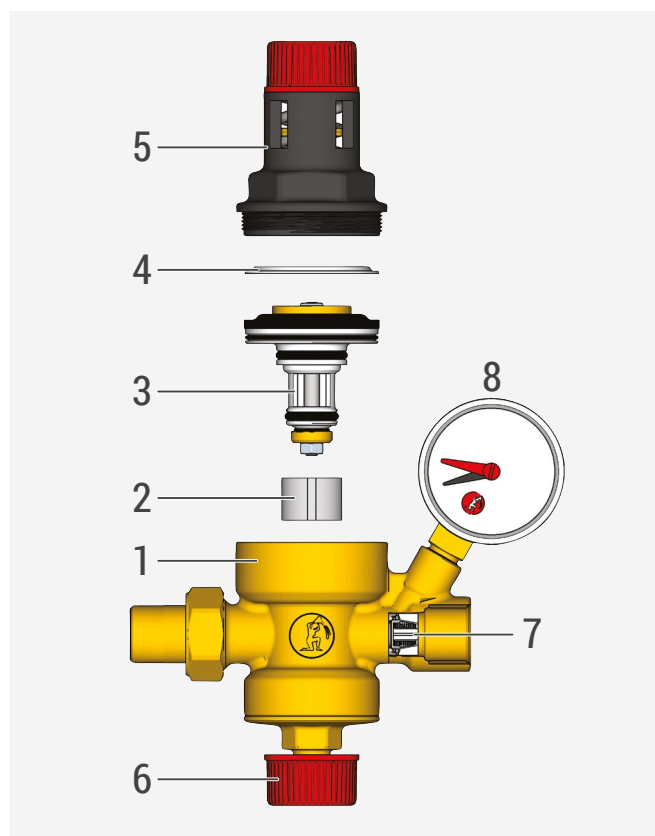
- The R150M filling unit optimizes operational times enabling to preset the fluid pressure before filling the system.
- Removable cartridge and filter for easy cleaning and maintenance.
- Anti-limestone function: the stopper seal housing is made with a low friction coefficient synthetic material and stainless steel adjustment rod.
- Pressure adjustment with compensated housing.



A Graduated scale in bar

B Calibration indicator

➤ Components



1 Body

2 Filter

3 Cartridge

4 Anti-loosening ring

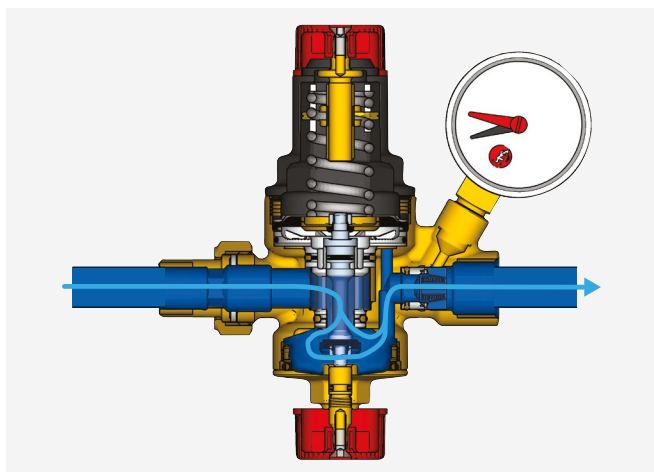
5 Upper bonnet with presetting scale

6 Shut-off valve

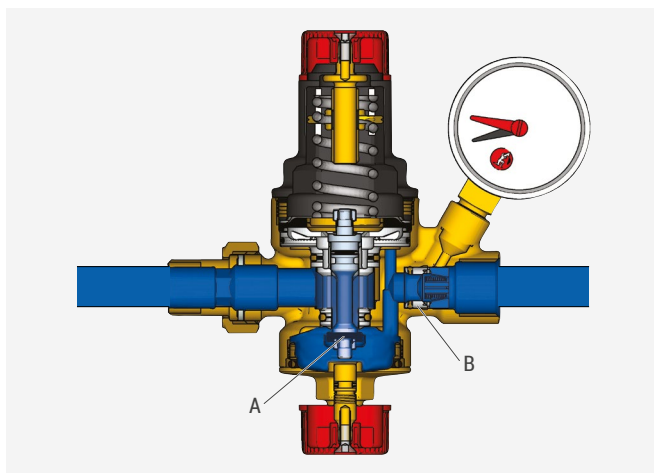
7 Check valve

8 Pressure gauge (only for R150MY003; plug for R150MY013)

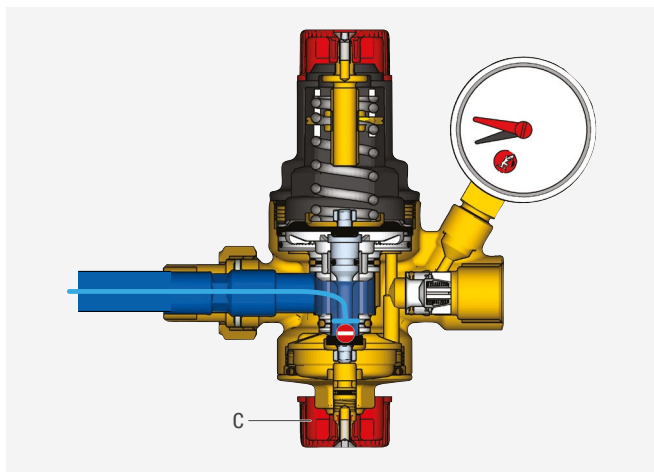
Operation



The water duct fluid enters the R150M filling unit and loads it up to the required pressure (calibration pressure).



When the system reaches the desired pressure, the stopper (A) closes without letting in any fluid. The check valve (B) prevents the system water from flowing back to the main water ducts.

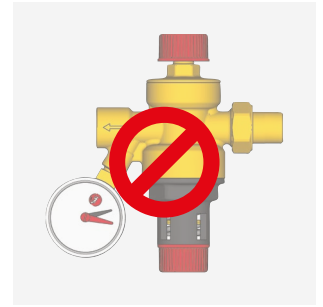
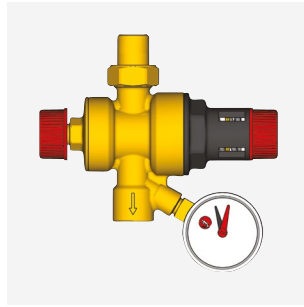
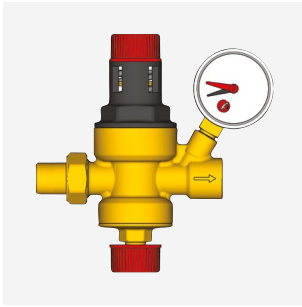


The R150M filling unit automatically reintegrates the installation water when the pressure drops below the calibration value, up to restoring the desired pressure. The automatic filling function can be deactivated by closing the shut-off valve (C) completely.

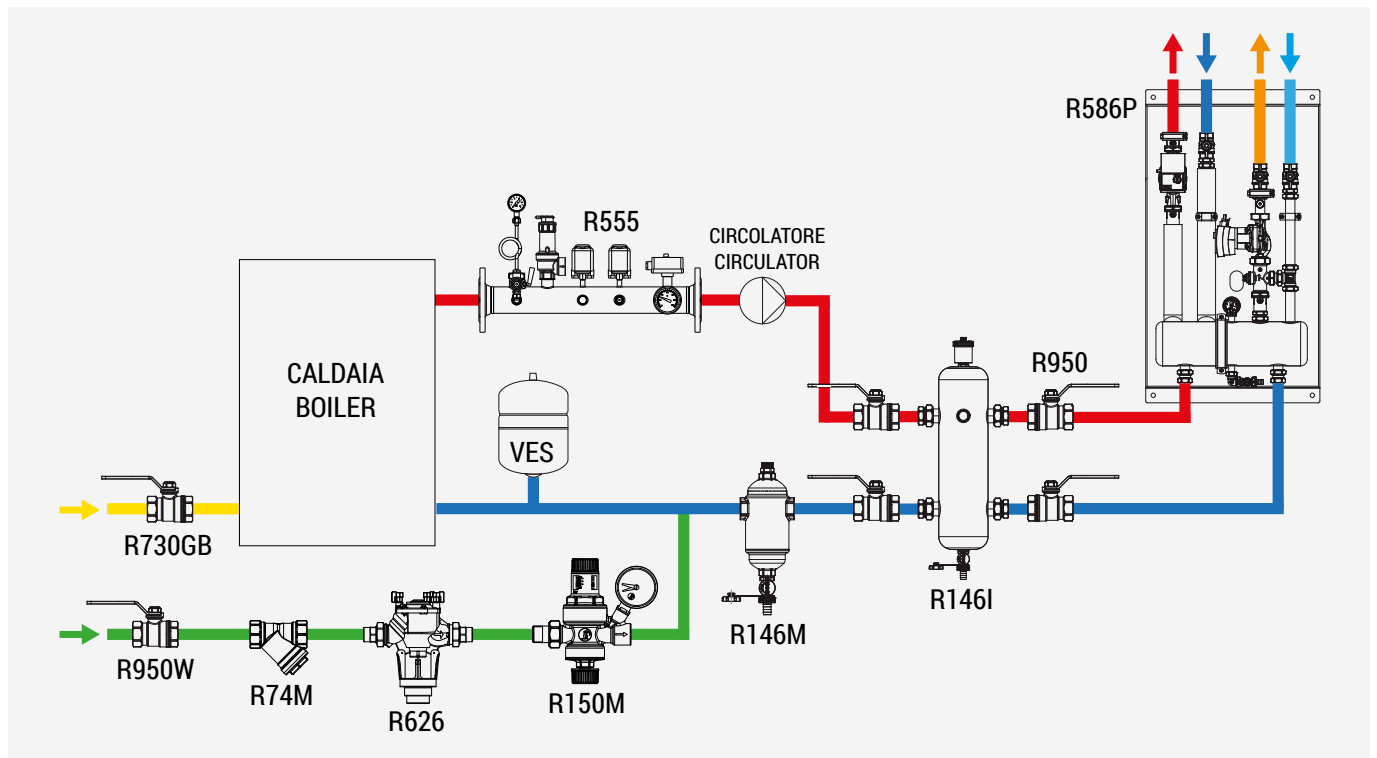
► Installation

The R150M filling unit can be installed both on vertical and horizontal pipes. It can not be installed upside down (pressure gauge connection downwards).

▲ WARNING. We recommend installing an interception valve before the filling unit to clean and service of the cartridge and filter.



Installation example



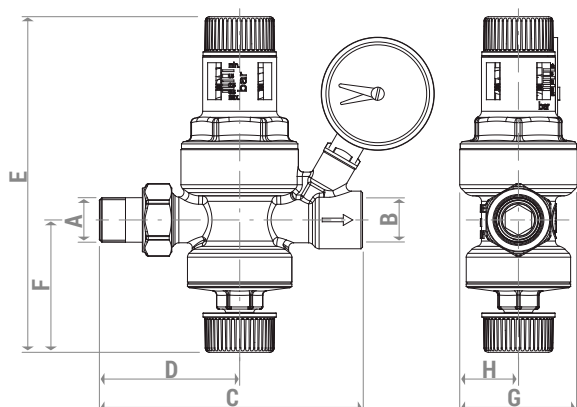
► Maintenance

Cartridge cleaning

To periodically clean and inspect or replace the entire cartridge proceed as follows:

- 1) Intercept the filling unit (install an interception valve before the unit).
- 2) Set the calibration pressure on the minimum value (turn the adjustment knob counterclockwise).
- 3) Remove the upper bonnet with a 40 mm hexagonal wrench, making sure the spring and anti-loosening ring do not come out.
- 4) Close the shut-off valve all the way through to easily remove the cartridge.
- 5) Use pliers to remove the cartridge from the top to clean/replace it.
- 6) Remove the filter to clean/replace it.
- 7) Fully open the shut-off valve and reassemble the components in reverse order.
- 8) Re-calibrate the unit to the desired calibrated pressure.

➤ Dimensions



PRODUCT CODE	A x B	C [mm]	D [mm]	E [mm]	F [mm]	G [mm]	H [mm]
R150MY003	G 1/2" M x G 1/2" F	121	64,5	154	61	54	27
R150MY013	G 1/2" M x G 1/2" F	121	64,5	154	61	54	27

➤ Product specifications

R150M

Automatic filling unit for installation on water adduction pipes of closed-circuit heating/cooling systems. UNI EN12165 - CW617N brass body. PA66 GF 20 upper bonnet. AISI304 stainless steel adjustment stem. EPDM gaskets. POM cartridge. Stainless steel filter. Possibility to preset the system fluid pressure. Removable cartridge and filter for easy cleaning and maintenance. Anti-limestone function and compensated housing pressure adjustment. Fluid: water. Temperature range: 5-70 °C. Inlet max. pressure: 16 bar. Adjustment range: 0,3÷4 bar (preset calibration: 1,5 bar). Accuracy: ± 0,2 bar. Pressure gauge scale (only for R150MY003): 0÷4 bar. Filtering capacity: 300 µm. Connections: inlet: G 1/2" M with tail piece; outlet: G 1/2" F; pressure gauge: G 1/4" F.

⚠ Safety Warning. Installation, commissioning and periodical maintenance of the product must be carried out by qualified operators in compliance with national regulations and/or local standards. A qualified installer must take all required measures, including use of Individual Protection Devices, for his and others' safety. An improper installation may damage people, animals or objects towards which Giacomini S.p.A. may not be held liable.

♻ Package Disposal. Carton boxes: paper recycling. Plastic bags and bubble wrap: plastic recycling.

ℹ Additional information. For more information, go to giacomini.com or contact our technical assistance service. This document provides only general indications. Giacomini S.p.A. may change at any time, without notice and for technical or commercial reasons, the items included herewith. The information included in this technical sheet do not exempt the user from strictly complying with the rules and good practice standards in force.

♻ Product Disposal. Do not dispose of product as municipal waste at the end of its life cycle. Dispose of product at a special recycling platform managed by local authorities or at retailers providing this type of service.