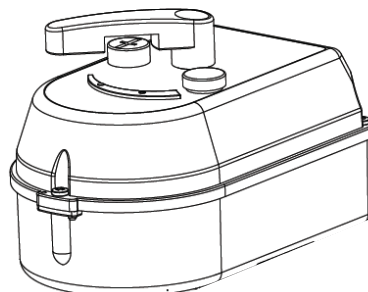


MV 120 - Stellantrieb für 3-Wege-Mischer 24V AC, 0-10V

Modulating rotary actuator for operating mixing valve MV 120

Actuator is controlled with standard modulating signal of 0...10VDC (factory default) and moves to the position defined by control signal. That allows actuator to be controlled by controllers with modulating output. Actuator is designed for operating 3- and 4- way mixing valves. Actuator has a fixed angle rotation of 90° and possibility of manual override with button on actuators cover (gear is disengaged for as long the button is locked)



Modulating control

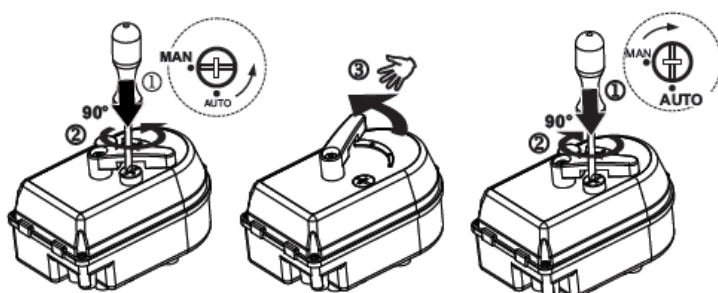
PN10, $\Delta P < 1 \text{ bar}$
+2...110°C



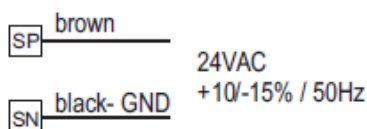
Technical data

Actuator	MV120..4417 0_10V X 24VAC COMP MOD
Power supply	24VAC +/-10%, 50Hz
Control signal Y	Voltage: 0,16..9,84V, 2..9,84V, 0,16..4,88V, 5,12..9,84V Current: 0..20mA, 4..20mA
Output signal X	Voltage: 0..10VDC, max < 0,5 mA/10V
Running time	105s/90°
Power consumption	3,5VA (working) / 1,5VA (standby)
Torque	8 Nm
Protection class	II (without earth wire)
Degree of protection	IP44
Connection cable	1.5 m lenght, 4 x 0,5 mm ²
Direction of rotation	defined
Manual operation	mechanical disengagement
Indication of position	actuator handle
Ambient temperature	0°C...+55°C, RH0%..80% non condensed
Non-operating temperature	-10°...+70°

Manual control



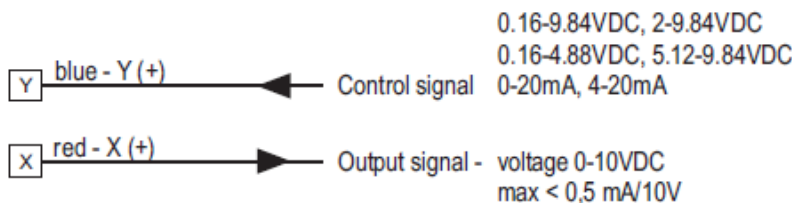
Electrical connection



Input impedance

U(V) - R=26K Ω

I(A) - R=500 Ω



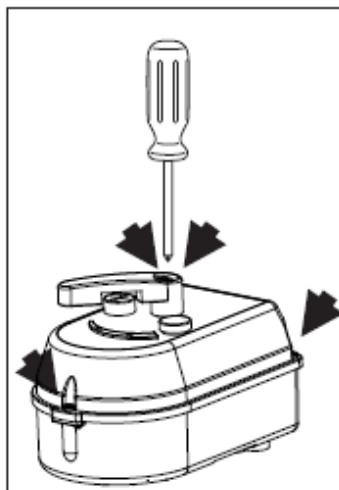
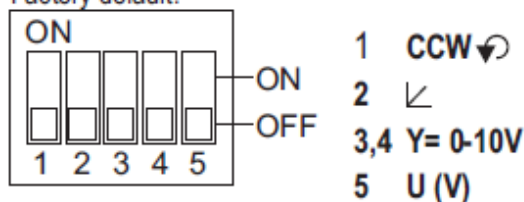
Warning:

The equipment must be connected to the electric power supply in a manner which complies with the legal requirements applicable at the place of use.

With DIP switches inside actuator is possible to set the following parameters:

DIP switches are located inside controller.
To open the controller it is necessary to loosen the screws on the cover (3x), and handle screw (1x).

Factory default:



DIP-switches:

With DIP switches inside actuator is possible to set the following parameters:

Direction of rotation: CCW ↺ / CW ↻

DIP	CCW ↺	CW ↻
1	OFF	ON

During changing position of DIP1 is performed calibration process. The actuator turns into left and right position. During process leave the button for manual control in position AUTO!

Control signal: direct/inverse

DIP	↗	↘
2	OFF	ON

Range setting

DIP	0,16-9,84V 0-20mA	2-9,84V 4-20mA	0.16-4.88V	5.12-9.84V
3	OFF	OFF	ON	ON
4	OFF	ON	OFF	ON

Control signal U(V)-voltage / I(mA)-current

DIP	U(V)	I(mA)
5	OFF	ON