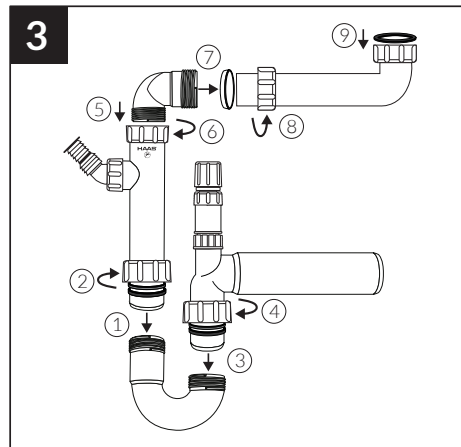
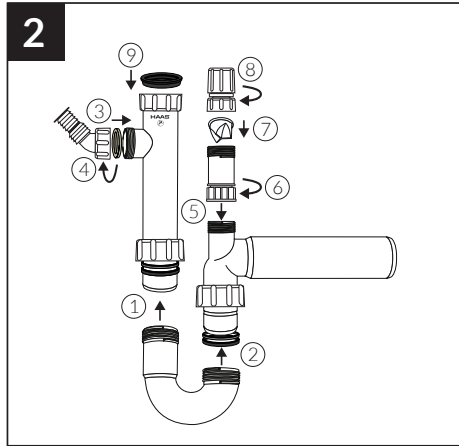
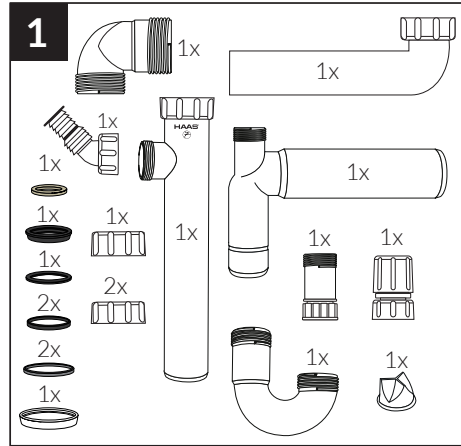


4

Technical drawing of a 90° elbow with a side branch. The drawing includes the following dimensions and labels:

- 95-285**: Horizontal distance from the start of the elbow to the center of the side branch.
- 150-270**: Vertical distance from the top of the elbow to the center of the side branch.
- 134**: Vertical distance from the bottom of the elbow to the center of the side branch.
- 80**: Horizontal distance from the start of the elbow to the center of the side branch.
- 70-220**: Horizontal distance from the center of the side branch to the end of the elbow.
- G**: Label for the top connection point.
- D**: Label for the side branch connection point.
- HAAB 20**: Label for the bottom connection point.
- Mittels Gewindeverlängerung um min. 5 cm aufbauen!**: Instruction to use a threaded extension of at least 5 cm for the side branch connection.



4

95-285

G

HAHN 2

Mittels Gewindeverlängerung um min. 5 cm aufbauen!

150-270

D

134

80

70-220